



REPORT



From the Desk of the Supervisor – Maria Zeller Brauer

Letter from the Supervisor

Dear Neighbors,

As we enter the fall season, I want to take a moment to talk about an issue that continues to weigh heavily on our community: food insecurity. While Wheeling Township is fortunate to have generous residents and dedicated volunteers, recent federal legislation and economic conditions are making it harder for many families to put food on the table.

Our township food pantry is one of our most vital services, entirely run by volunteers and sustained through the generosity of donations. Last year alone, there were **6,223 visits to the pantry, feeding nearly 13,500 people including more than 5,600 seniors**. This represents a **6% increase from the prior year**, and all indications show that the need will continue to grow.

The recent cuts to federal benefits including the Supplemental Nutrition Assistance Program (SNAP) are expected to deepen this challenge. Across Illinois, **1.8 million residents, including 650,000 children, will see reduced benefits**. Families will lose or see reductions in monthly SNAP assistance, and many children may also lose access to school meals. Higher grocery costs compound the problem, leaving more people turning to local food pantries for help.

For our pantry, this means greater demand at a time when every donation counts. Increased need coupled with higher food costs will significantly impact our ability to serve all who come to us. **That is why we are asking our neighbors to step forward in any way they can by donating non-perishable food, paper goods, or monetary contributions, or by volunteering time to help keep the pantry running smoothly.** Just as important, I want to remind residents facing food insecurity that they should not wait to seek help. Please call us to schedule an appointment as soon as the need arises, whether it is an emergency or a longer-term challenge, so we can connect you with both pantry services and other programs that may provide additional support.

Food insecurity is not the only rising need we are seeing. This year, our **Community Mental Health Board received 24 funding applications, 13 more than last year**. This increase reflects the growing demand for mental health, developmental disability, and substance use services. I am proud to share that for the first time since voters approved the referendum two years ago, the Township will be levying the tax to fully fund the Community Mental Health Board. This step will allow us to better meet the needs of residents and strengthen our community's safety net.

As your Township Supervisor, I am committed to ensuring that Wheeling Township remains a place where neighbors support one another in times of challenge. Together, through service, generosity, and care, we can face these hardships head on and make sure no one is left behind.

With gratitude and commitment,

Maria Zeller Brauer
Wheeling Township Supervisor

P.S. As the holidays approach, please also consider donating to our **Thanksgiving Baskets, Adopt-a-Family, and Operation Support Our Troops programs**, all of which are outlined in this newsletter. Your support helps brighten the season for our neighbors in need. Visit wheelingtownship.com or call 847-259-7730 for more information.

IN THIS ISSUE...

Supervisor's Letter	1
Assessor's Office	2
Clerk's Office	3
LIHEAP	3
Mental Health Board	4
Currently Funded Mental Health Board Agencies	
The Giving Season	5
Senior & Disability News	6
Elected Officials	8
Food Pantry & Help Your Neighbor	

FROM THE ASSESSOR'S OFFICE

Ken Jochum

27% AVERAGE SINGLE FAMILY INCREASE. 37% AVERAGE CONDO INCREASE

Taxpayers of Wheeling Township have been receiving letters from the Cook County Assessor and many are asking what this is all about. In this article we will attempt to explain what is happening and how it affects the property owners of the Township.

The Cook County Assessor is mandated to assess the value of property in the county every three years, this is a Triennial Reassessment.

In order to accomplish this huge task, he splits the county into three parts and we are in the northern third (all suburbs north of North Avenue) which is being reassessed in 2025. The value which is identified through this process establishes the tax base from which the taxing districts will levy taxes for their services.

Reassessment letters have been mailed and the County Assessor was open for appeals from August 18th thru September 30. Our office processed a significant number of appeals as well as exemptions and other issues during the appeal period.

Our appellants should receive a response from the County Assessor within two months and our expectation is that the Board of Review will open for appeals at that time. The results of this appeals season will appear on the tax bill which will be sent in August 2026.

What were the reassessment results for Wheeling Township?

WHEELING TOWNSHIP: RESIDENTIAL

Industrial commercial properties increased in value an average of 37% and commercial apartments increase 44% in value.

The Assessor uses information from sales of similar properties from the last three years to determine value, he does not look at specific internal property characteristics rather the assessment is based on property construction, size, neighborhood.

Usually I advise property owners to ask themselves, are properties similar to mine selling for this amount in our neighborhood, if so the Assessor got it right. As we have experienced, sales prices of homes increased significantly during the last three years in the Township.

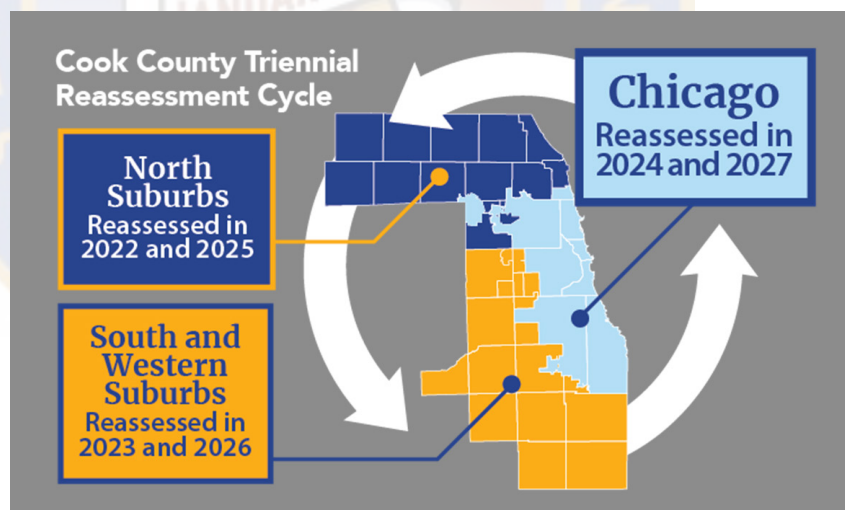
Property owners will have an opportunity to file an appeal with the Board of Review by pre-filing at our office and we will submit the appeal when the data becomes available and the Board is open.

Property owners should be vigilant about their assessed value but also remember that they have to be on top of tax levies which various taxing bodies are setting.

Please feel free to contact our office with any questions or assistance which you may need.

WHERE ARE THE 2024 SECOND INSTALLMENT TAX BILLS?

As the time this article was written we had not been given a date for release of the 2024 second installment tax bills.



Wheeling Township: Residential

Residential homes: Average growth of 27%

Predominant property types and average values

Medium-sized, one-story homes make up 27% of stock (approx. 9700)

Average growth of 22% and average value of 362k

Newer, larger, two-story homes make up 22% of stock (approx. 7900 homes)

Average growth of 32%; average value of 619k

Split-level homes make up 9% of stock (approx. 5900 homes)

Average growth of 25%; average value of 491k

These property types account for 65% of the residential parcels in this township

FROM THE CLERK'S OFFICE

Joanna Gauza



2026 PRIMARY ELECTIONS & VOTER REGISTRATION

Primary Elections will be held on March 17, 2026 to determine party candidates. The party candidates that win will then run in the November 3, 2026 General Election. These elections will determine the Illinois Governor, U.S. Senator, U.S. Congressional Representatives, Illinois Legislative offices and other local governing officials. In fact, candidates are already gathering signatures from registered voters to get on the ballot for the March 17, 2026 Primary Election.

Now is a good time to make sure you are registered. If you are not registered, have just moved into the Township, have moved to another residence in the Township, or changed your name; you need to register to be able to vote in this election. To register, come to the Township Clerk's Office, Monday-Friday, between 9:00-4:30. All you need are two forms of identification (one showing your current address), to be a citizen of the United States, be 18 years of age or older on November 3, 2026, and to have lived in the Township for at least 30 days before the election. If you have an Illinois driver's license or state ID, you may register online through the Illinois State Board of Elections website <https://ova.elections.il.gov/>. If you don't have a driver's license or state ID, go to <https://www.cookcountyclerk.com/agency/register-vote> and complete the form online, print, sign and mail it to the address on the application. If you register by mail, you must bring a valid state issued picture identification when you vote for the first time.

As always, you can register to vote in-person during early voting or on Election Day. If you want to vote by mail, please contact Cook County at <https://www.cookcountyclerk.com/agency/vote-mail> to request a mail-in ballot.

ENERGY ASSISTANCE NOW TAKING APPLICATIONS

LIHEAP, or Low-Income Home Energy Assistance Program, is now accepting applications for the 2025-26 winter heating season. Senior citizens & those receiving Social Security Disability or SSI can begin applying in October 1, 2025. The program will open to all low-income households in November 1, 2025.

DVP, or Direct Vendor Payment, is designed to assist income-eligible households with energy services in the form of a one-time benefit payment to the utility companies that is applied directly to the household's energy bills. The amount of the payment is determined by income, household size, and fuel type.

Income Guidelines for 2025-26 are as follows:

Household Size	Gross Income for 30 days Prior to Application Date
1	\$3,332
2	\$4,357
3	\$5,382
4	\$6,407
5	\$7,432
6	\$8,457
7	\$8,649
8	\$8,842



Those interested in applying must provide thorough documentation, including: Social Security cards for everyone living in the household, current gas and electric bills, and proof of all sources of household income for the last 30 days. Additional documentation may be requested. To make an appointment to apply, please call the General Assistance Department at 847-259-7730.

WHEELING TOWNSHIP COMMUNITY MENTAL HEALTH BOARD

President Sue Hayes

The Community Mental Health Board is excited to share encouraging news with our neighbors and partners: Supervisor Maria Zeller Brauer and the Wheeling Township Board of Trustees continue to demonstrate strong leadership and support by affirming Wheeling Township's intent to move forward with the establishment of the voter-approved 708 Board levy.

While the finalization is still forthcoming, this affirmation marks a critical step in honoring the will of the voters and expanding access to mental health, substance use, and intellectual/developmental disability services across Wheeling Township. We are deeply grateful for the Supervisor's and Trustees' ongoing commitment to the health and well-being of our community.

As part of our mission to ensure that high-quality services are accessible to those who need them, the Community Mental Health Board significantly increased outreach and awareness efforts this summer. We're proud to share that 24 organizations submitted applications for potential funding, including 13 that represent new, prospective partners.

This strong response not only highlights the growing need for behavioral health and intellectual/developmental disabilities services but also demonstrates a shared readiness among local organizations to step up and serve once funding is available.

The establishment of the 708 Board levy will empower us to responsibly allocate dedicated resources, helping more residents access the care and support they deserve.

We thank Supervisor Zeller Brauer and the Board of Trustees for their leadership, and we thank you, our community, for continuing to stand with us as we come together to advance our vision of inclusive and responsive community care.

As we build on our progress and prepare for the future, we thank you for your trust and engagement.

Mission Statement

To ensure that services related to mental illness, developmental disabilities, and substance abuse are available and known to the residents of Wheeling Township.

CURRENTLY FUNDED WHEELING TOWNSHIP COMMUNITY MENTAL HEALTH BOARD AGENCIES

- Ascension Center for Mental Health
- Avenues to Independence
- Center for Enriched Living
- Children's Advocacy Center
- Clearbrook
- Countryside/Little City Foundation
- Josselyn Center
- Journeys/The Road Home
- Kenneth Young Center
- Omni
- Search, Inc.



The Giving Season Approaches...

A great way to experience that warm, heart-filled-to-the-brim happiness is to help a neighbor! Wheeling Township is seeking donations for this year's Thanksgiving and Holiday Adopt-A-Family Programs – here's how you can participate!

Thanksgiving Baskets: Provide a Thanksgiving meal with traditional fixings for a family from our food pantry and a gift card for the meat purchase. A list of items and drop off information will be provided after your sign up has been confirmed.

Holiday Adopt-A-Family: In previous years, donors were asked to donate wrapped presents associated with a family's holiday wish list. **This year, however, we will be providing gift cards to our Adopt-A-Family recipients.** Donors are being asked to donate \$50 gift cards from the following stores only: **Target, Walmart, or Kohl's**. The gift cards will be shared with our low-income families with minor children who enroll in the Adopt-A-Family program. Sign up by November 7, 2025. Gift cards need to be dropped off by December 1, 2025.

To participate in either program, please follow these instructions:

1. Complete the form below.
2. Email it to: **GA@wheelingtowship.com** OR fax it to: 847-259-1570 OR mail it to: Wheeling Township AFP, 1616 N. Arlington Heights Road, Arlington Heights, IL 60004 **by November 3rd.**
3. Receive your confirmation with instructions.
4. Drop off your Thanksgiving Basket or gift cards on the assigned date.
5. Enjoy the holidays with a warm heart knowing that you warmed the hearts of a neighbor!



Name _____

Company _____

Address _____

City, State, Zip _____

Phone _____ Fax _____

Email _____

Number of Thanksgiving Baskets you will provide _____

Number of \$50 Gift Cards you would like to donate for the Holiday Adopt-A-Family Program _____

(Please deliver gift cards to Wheeling Township by December 1, 2025)

SENIOR AND DISABILITY NEWS

Call 847-259-7730 to register for any of the Programs & Services offered through Wheeling Township.

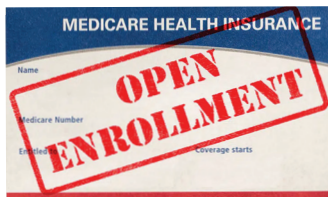
Upcoming Programs

What's new with 2026 Medicare Plans?

Friday, October 24th

10 am– 11:30 am • Presented on Zoom

Join **Kim Saunchgrow**, Wheeling Township's Senior & Disability Services Resource Specialist and SHIP Counselor, as she updates you on all the changes to 2026's Medicare Part D and Advantage Plans. If you have a Part C Advantage Plan or a Part D Drug Plan, you should review your plan every year. Kim will delve into what's new for 2026 and what's changed so that you will be able to make informed choices for yourself. SHIP Counselors are trained by the Illinois Dept on Aging, and cannot hold an insurance license nor be affiliated with any insurance company, so you truly receive honest, and beneficial free information...without all the hype. Program will be recorded so you may register and watch it later. To register, call 847-259-7730.



Monday, October 27th

10 am – 11:30 am • In-person program

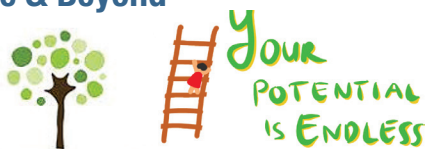
Join **Bob Kerr**, one of Wheeling Township's highly skilled and trained volunteer SHIP Counselors, as he updates you on all the changes to 2026's Medicare Part D and Advantage Plans. If you have a Part C Advantage Plan or a Part D Drug Plan, you should review your plan every year. Bob will delve into what's new for 2026 and what's changed so that you will be able to make informed choices for yourself. SHIP Counselors are trained by the Illinois Dept on Aging, and cannot hold an insurance license nor be affiliated with any insurance company, so you truly receive honest and beneficial free information...without all the hype. Places are limited, so call early. To register, call 847-259-7730.

Flourishing at Midlife & Beyond

**Thursday,
November 20th**

10 am – 11:30 am

Presented on Zoom a flourishing life



Join Township favorite, **Dr. Ilene Berns-Zare**, as she explores how to invigorate your potential for flourishing at midlife and beyond. How can we re-envision what's possible for you in this season of life? This webinar will help you reimagine your potential as you grow older and wiser. Dr. Berns-Zare will interweave research-informed concepts with personal insights and practical strategies to help you enrich your day-to-day with great inspiration, flourishing, and awakenings to personal transformation. Dr. Berns-Zare is an author, speaker, and certified life/executive coach. She is a featured blogger for Psychology Today, and an annual speaker for Wheeling Township. Program will be recorded so you may register and watch it later. To register, call 847-259-7730.

Annual Holiday Lights Tour

Wednesday, December 10th

5:00 pm – 8:30 pm

If you are a registered Wheeling Township bus passenger, call our Transportation Department at 847-259-7743 to make your reservation for our festive Holiday Lights tour – it's our annual neighborhood bus event to let you see the beautiful holiday lights in our community! Date: Wednesday, December 10th; time: 5pm – 8:30pm.



This event is intended for our Township's seniors and disabled residents who aren't able to get out to see the lights on their own – it is not for children or groups. All passengers must live in Wheeling Township, and every participant must already be a registered bus rider. We cannot accommodate any last-minute additions or extra guests.

We will pick you up at your home and take you on an evening tour of the holiday lights in Wheeling Township and return you safely home after the tour, so visions of sugar plums can dance in your head. We even have volunteer "elves" on each bus!

Calls for reservations **begin on Monday, November 3rd**. It is first come, first served. Space is limited and you must be a registered rider to participate. Call the Transportation Office to learn more: 847-259-7743.

HOME DELIVERED MEAL PROGRAM

If you have concerns about your ability to shop or cook for yourself (or know someone who might need help), consider Wheeling Township's Home Delivered Meal Program. The Township offers a reasonably priced home-delivered hot meal program for residents of the Township who meet eligibility requirements.



How does the program work?

A hot, freshly prepared meal is delivered at mid-day, Monday-Friday, right to the door of the recipient by a friendly volunteer. The Lutheran Home makes all of our food.

Cost of the meals?

Wheeling Township's program is a self-pay program: The hot meal costs \$8.00 per day. A cold meal (which is delivered at the same time) is available for an additional \$5.75 per day. Bills are mailed monthly for the meals received. Applicants must agree to receive meals 5 days a week for a minimum of 30 days.

Who is eligible?

- Must be a resident over 60 or permanently disabled individual over 18
- Must reside within Wheeling Township
- Must be considered homebound and/or no longer driving
- Must not have a full-time caregiver
- There must be availability on a route

If you're interested in finding out more about the program, contact our Home Delivered Meal Program at 847-259-7730, ext. 19, or send an email to: HomeDeliveredMeals@Wheelingtowship.com.

Help Support Our Troops...

It's Donation Time Again

Wheeling Township's annual Donation Drive to support Operation Support Our Troops, America Inc. (OSOT) will be held this November! We'll be collecting the items below for "Comfort & Care" packages that OSOT puts together and ships to active Troops around the world.

Donations will be accepted the entire month of November at our office: 1616 N. Arlington Heights Rd., Arlington Hts, 60004

Let's see if we can top 2024's donation levels. Last year, 2,405 pounds of goodies were collected, as was an amazing \$4,140 in financial contributions. Over 2,000 hand-written cards, letters or drawings were donated, too. Let's see if we can beat that this year!

Items to Donate (some new items this year)

1. Peanut butter packets or jelly packets (no jars)
2. \$10 - \$25 Amazon gift cards
3. Small tissue packets
4. Slim-Jims (or other brands of meat sticks)
5. Small-sized puzzle books
6. Trimmable comfort shoe insoles
7. Uno game cards (or other types of card games)
8. Travel sized shampoo, conditioner, body wash, deodorant
9. Non-aerosol shaving cream
10. Lip balms/Chapsticks
11. Cough drops/Foot Powder/Antacids
12. Breakfast bars/granola bars/protein bars
13. Tuna packets
14. Individually wrapped packages of crackers / cookies / trail mix / nuts
15. Gum / Mints
16. Individual microwaveable mac & cheese cups or packets
17. Toothbrushes and small/large toothpaste
18. Travel size alcohol free mouthwash
19. White or black athletic socks
20. Rice Krispie Treats
21. Pop-Tarts (only small boxes, not warehouse-store sized boxes)
22. Halloween candy is welcomed



Please DO NOT donate: bags of potato chips (they get crushed), plastic fruit cups (they often leak), coffee products, and nothing with alcohol in it (hand sanitizer/mouthwash, etc). Heightened security and changes at USPS have changed what may be mailed to many locations. Anything donated that OSOT can't use will be given to the Wheeling Township Food Pantry.

Other Ways You Can Help:

- **Make a financial donation:** Donations help cover the cost of postage (each box costs OSOT \$30 to ship). Make checks payable to Operation Support our Troops – America, Inc. Please note that OSOT is a 501(c)(3) not-for-profit organization, meaning your donation to them is tax deductible and they will send you a thank you letter.

- **Write encouraging cards:** The most coveted items in care packages are encouraging cards or pictures from school kids. NO HOLIDAY CARDS, please! Only cards or letters that can be used throughout the year are requested. Whether a scribbled drawing from a 1st grader or a heartfelt letter from a homebound senior, each message is precious and appreciated. Every care package sent to military personnel includes at least one letter or drawing. Address your letter or card to: "Dear Military Person." Please do not seal any letters or cards.

Donations of goodies, checks and letters can be dropped off at Wheeling Township, 1616 N. Arlington Heights Rd., Arlington Heights, the entire month of November (9:00am - 4:30pm). Thank you in advance for supporting America's Troops! For more information, call Lynndah Lahey, Director of Senior & Disability Services at 847-259-7730, ext. 21, or email: LLahey@wheelingtowship.com.

Medicare can be complicated...

SHIP Can Help!!

The Senior Health Insurance Assistance Program (SHIP)



SHIP is a statewide Medicare counseling service that provides FREE and OBJECTIVE Medicare counseling to individuals and their families.

If you are new to Medicare, *currently have Medicare, or are planning to retire soon* and have questions, Wheeling Township's SHIP Counselors are here help you.

Our dedicated and knowledgeable SHIP Counselor volunteers are extensively trained by the Illinois Department on Aging. *They can:*

- Explain how Medicare works and when to sign up
- Answer your Medicare questions and explain your benefit coverage
- Apply for programs to lower your prescriptions costs and/or Medicare premiums
- Compare different Medigap/Medicare Supplement policies
- Review your prescription drug plan during Open Enrollment each year (Oct 15-Dec 7)
- Apply for Benefit Access

Call 847-259-7730 to make your appointment today!

DRIVER SAFETY

AARP Real Possibilities

AARP SMART DRIVER COURSE TUNE UP YOUR DRIVING SKILLS

The AARP Smart Driver Course is designed to help you tune up your driving skills, learn about normal age-related physical changes and how to adjust your driving to compensate, and reduce your chances of receiving a traffic violation or getting into an accident. Upon the completion of the eight hour, two-session class, you will be issued a certificate which may be submitted to your automobile insurance company for a discount on your auto insurance. **You must attend both sessions to get the certificate.**

Cost: \$20 for AARP members and \$25 for non-AARP members. Checks or cash accepted; checks should be made payable to AARP and brought to the first class. Classes are held at the Wheeling Township building. **Dinner is not provided, so you may bring a sandwich with you.** Coffee, water and cookies will be provided. Call 847-259-7730 to register.

October 13 & 14th • 4:30pm – 8:30pm both nights



Wheeling Township Report, Inc.

1616 N. Arlington Heights Road
Arlington Heights, IL 60004
847-259-7730

www.wheelingtowship.com

Hours: 9 a.m. - 4:30 p.m. weekdays

Township Board Meetings: 7:00 p.m.
on the fourth Tuesday of each month

Follow us on:



ECRWSS
NON PROFIT
ORGANIZATION
U.S. POSTAGE
PAID
PALATINE P&DC IL
PERMIT NO 2597

ECRWSS

Residential Postal Customer

WHEELING TOWNSHIP ELECTED OFFICIALS



Maria Zeller Brauer
SUPERVISOR



Ken Jochum
ASSESSOR



Joanna Gauza
TOWN CLERK



John Geier
TRUSTEE



Lorri Grainawi
TRUSTEE



Austin Mejdrich
TRUSTEE



Sheri Williams
TRUSTEE

**DONATE TO
HELP YOUR
NEIGHBORS**



The Wheeling Township Emergency Fund, a 501 (c) (3),
a not for profit, now has the option to accept online
donations. Scan the QR code above to donate to:

- Unrestricted (to be used where most needed)
- Food Pantry
- Adopt A Family



When shopping this Fall season, please consider donating some of
these Top 5 Most Needed Items to the Wheeling Township Food Pantry:

BAKING GOODS: All Purpose Flour, Baking Powder, Canola Oil,
Granulated Sugar

CANNED BEANS: Cannellini, Great Northern Beans, Pinto,
Pork & Beans

CANNED MEAT: Beef Stew, Chicken Breast, Chili, Corned Beef
Hash, SPAM

CANNED VEGETABLES: Beets, Carrots, Kernel Corn, Mixed, Peas

RAMEN NOODLES: Ramen Cup-O-Soup, Egg Noodles,
Broad Noodles